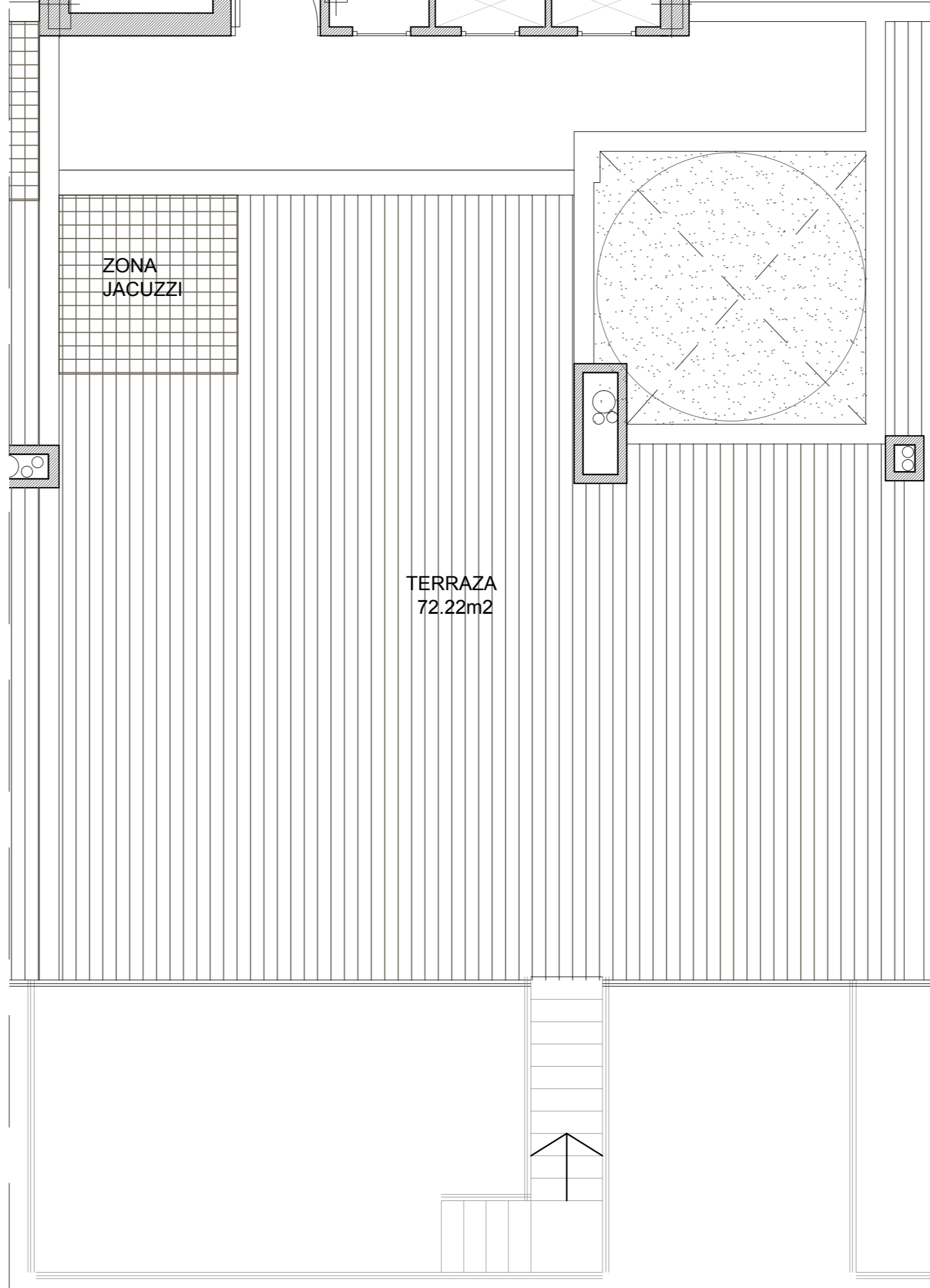
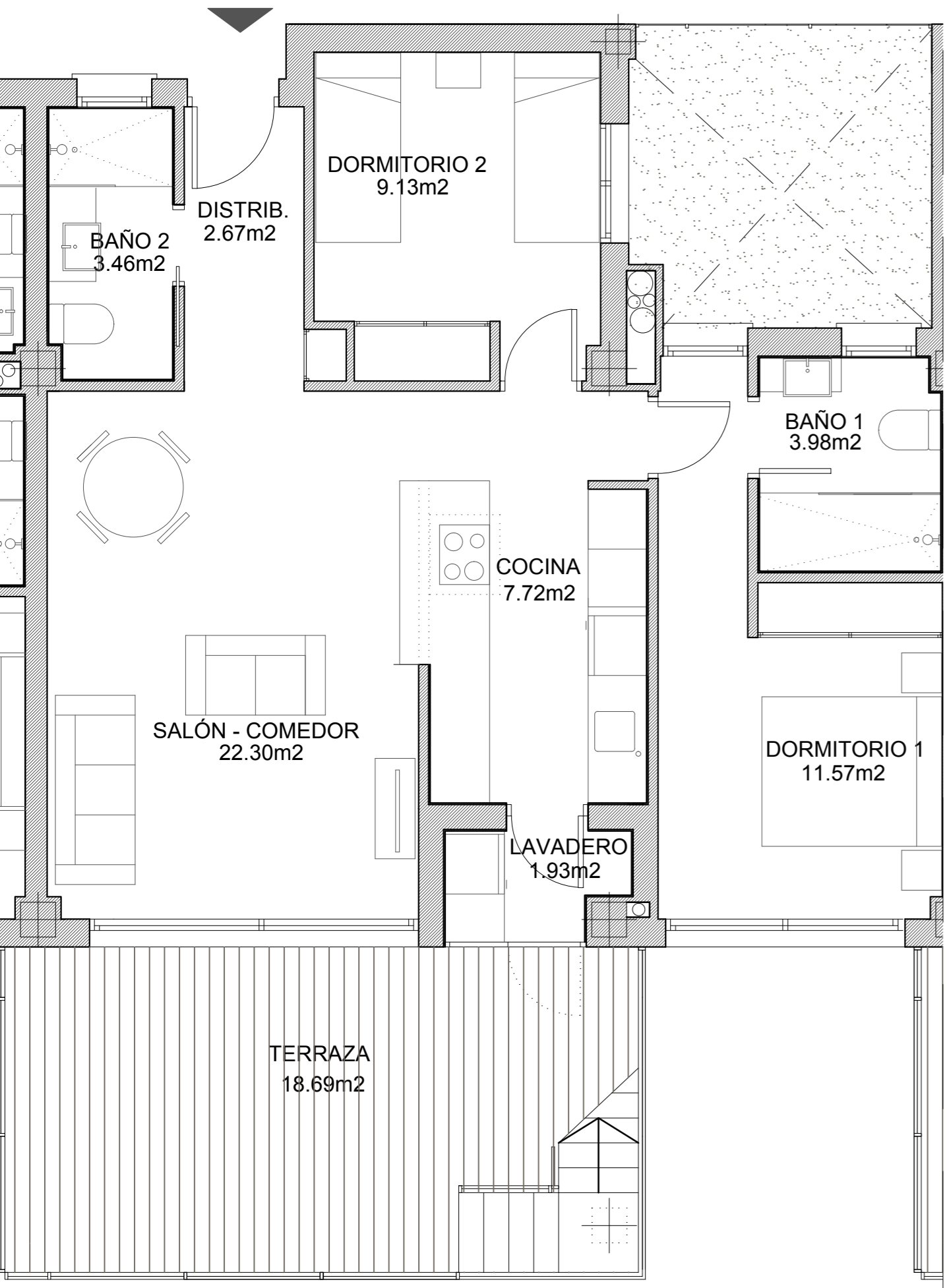
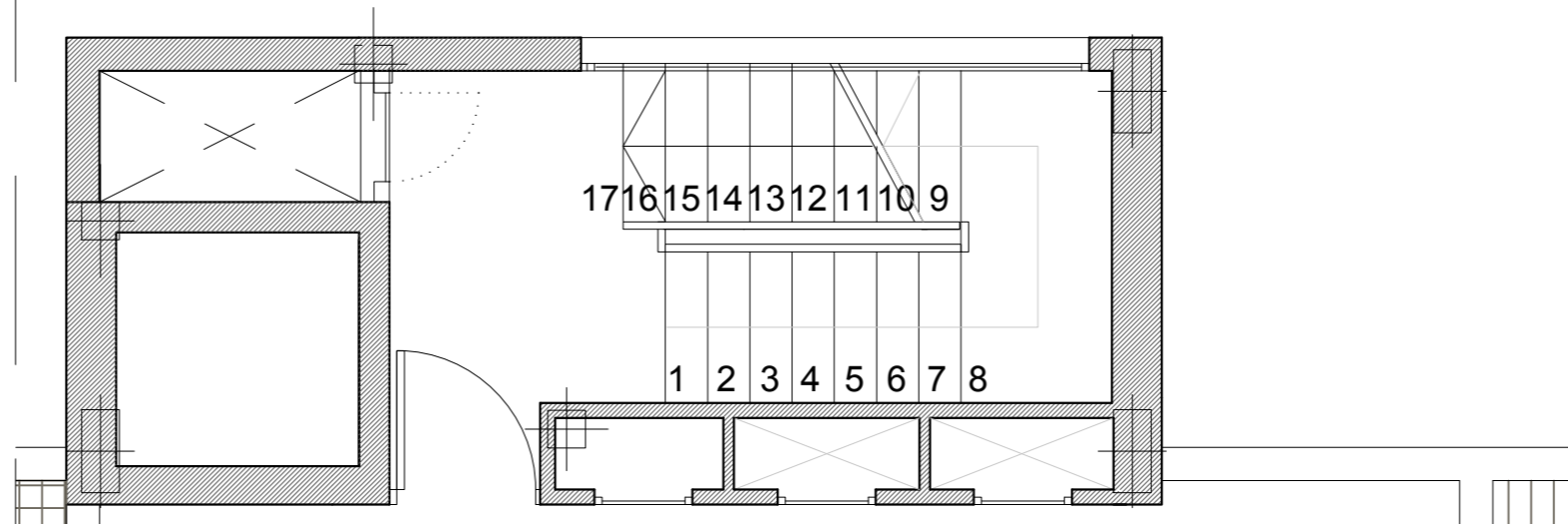
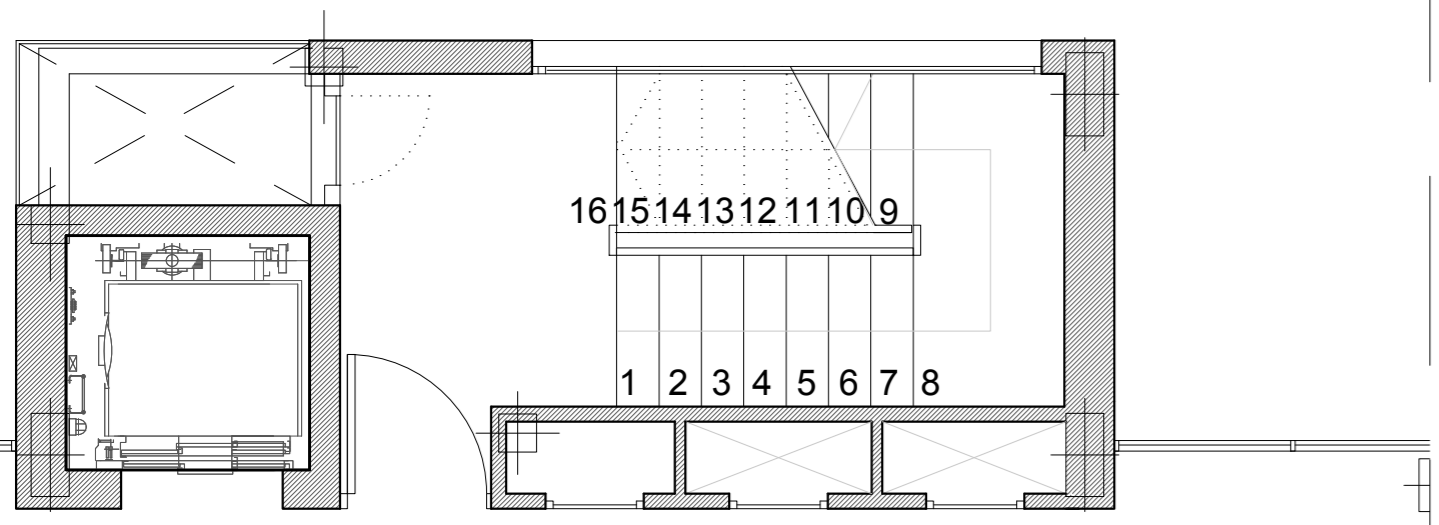
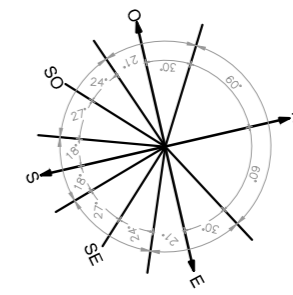


VIVIENDA 2 DORMITORIOS - PATIO



VIVIENDA 2 DORMITORIOS - PATIO PLANTA ÁTICO

ESPACIOS CERRADOS	SUPERFICIE ÚTIL	SUPERFICIE COMPUTABLE
salón-comedor	22.30m ²	22.30m ²
cocina	7.72m ²	7.72m ²
dormitorio 1	11.57m ²	11.57m ²
baño 1	3.98m ²	3.98m ²
dormitorio 2	9.13m ²	9.13m ²
baño 2	3.46m ²	3.46m ²
entrada	2.67m ²	2.67m ²
galería	1.93m ²	1.93m ²

ESPACIOS ABIERTOS	SUPERFICIE ÚTIL	SUPERFICIE COMPUTABLE
terrazza 1 abierta	18.69m ²	0.00m ²
terrazza 2 abierta	71.82m ²	0.00m ²

SUPERFICIE CONSTR. INCLUIDO TERRAZAS	162.04m²
---	----------------------------

BLOQUE 6

139	140	141	142	143	144
133	134	135	136	137	138
127	128	129	130	131	132
121	122	123	124	125	126

