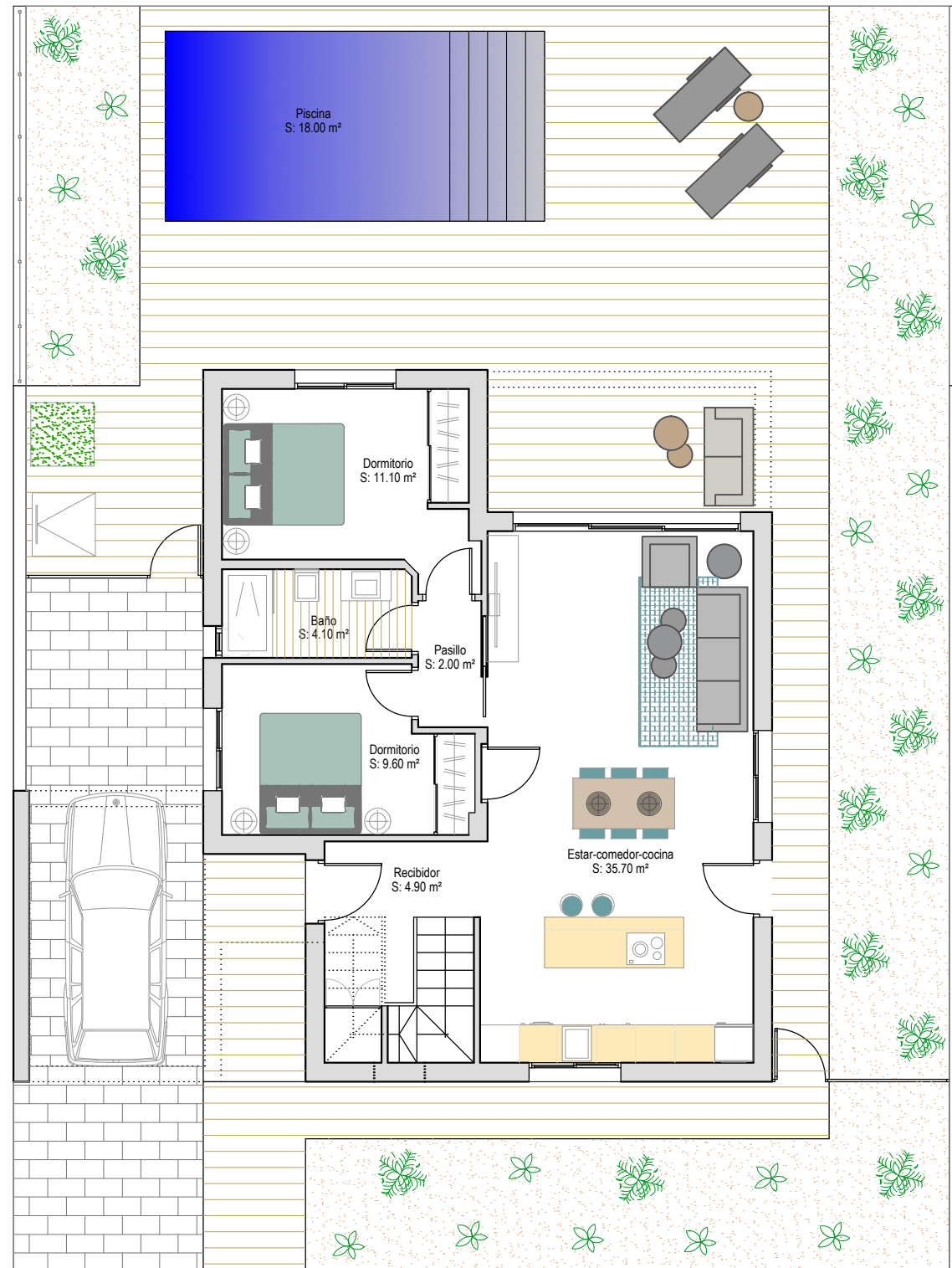
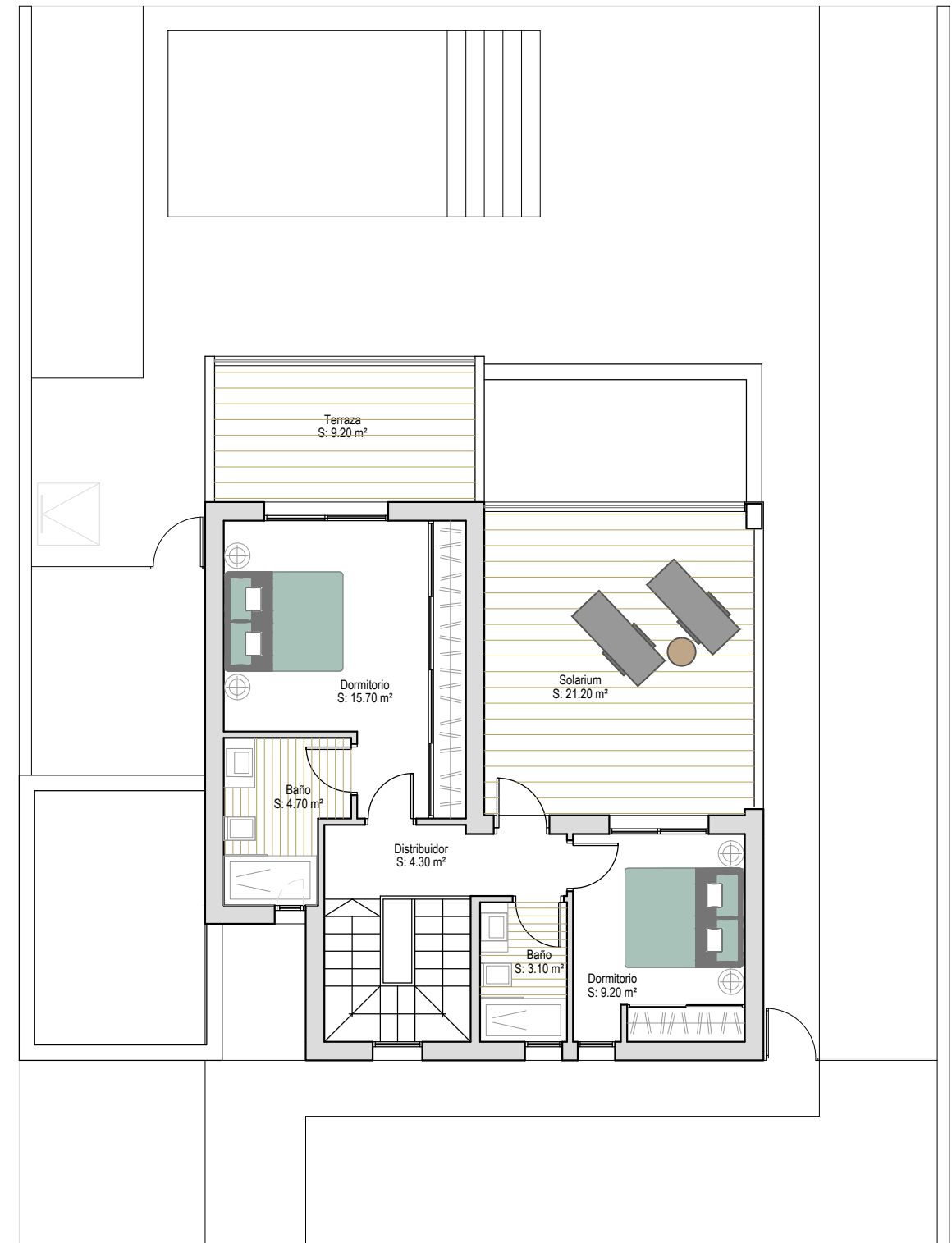


VILLA 10.17a

| | |
|-----------------------------|-----------------------------|
| Sup. Construida P. Baja: | 84'48 m ² |
| Sup. Construida P. Primera: | 50'57 m ² |
| Sup. Construida | 135'05 m² |
| Sup. Solarium: | 21'20 m ² |
| Sup. Terraza: | 9'20 m ² |
| Sup. Jardín: | 189'05 m ² |
| Sup. Piscina: | 18.00 m ² |
| TOTAL: | 372'52 m² |
| Sup. Parcela: | 300.00 m ² |



Planta baja



Planta primera