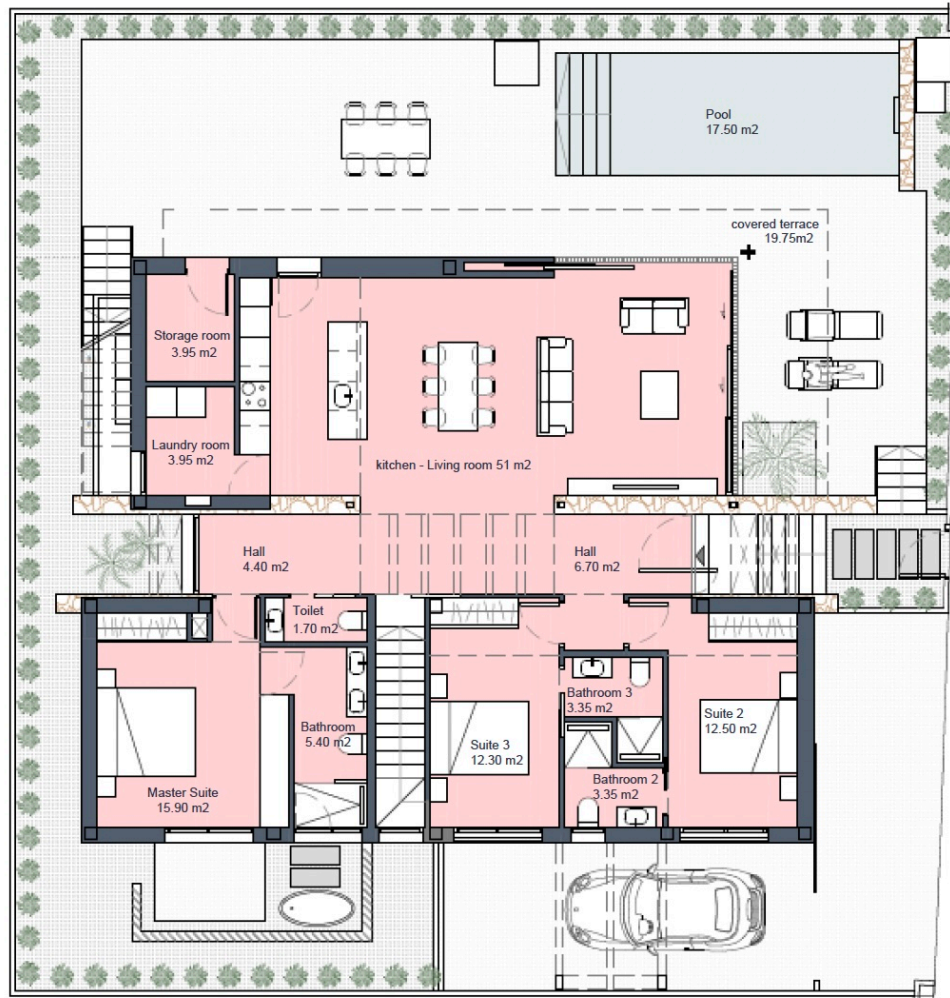




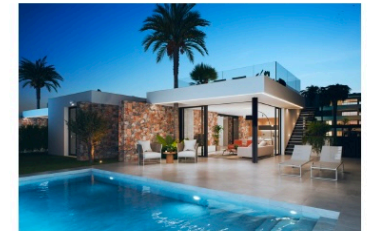
GROUND FLOOR



our signature villa

santarosalia.life

Santa Rosalía lake and life resort



SURFACES

Villa Signature 6	386 m ²
	Superficie construida
Ground floor	159.70 m ²
Basement	168.80 m ²
TOTAL INTERIOR	328.50 m²
Covered terrace	19.75 m ²
Uncovered spaces (Ground floor)	205.55 m ²
Solarium	55.90 m ²
TOTAL OUTDOOR SPACES	281.20 m²

Documento de carácter informativo, no contractual. Puede sufrir variaciones por razones técnicas, legales o comerciales. El mobiliario y electrodomésticos son meramente decorativos y no incluidos.

This plan is for illustration purposes only and may be modified for technical, legal or commercial reasons. The furniture and appliances shown are purely decorative and are not included.



José Díaz García

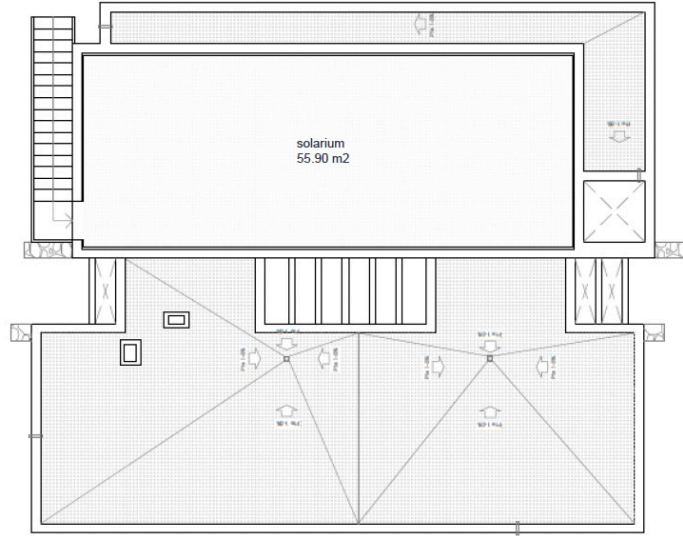
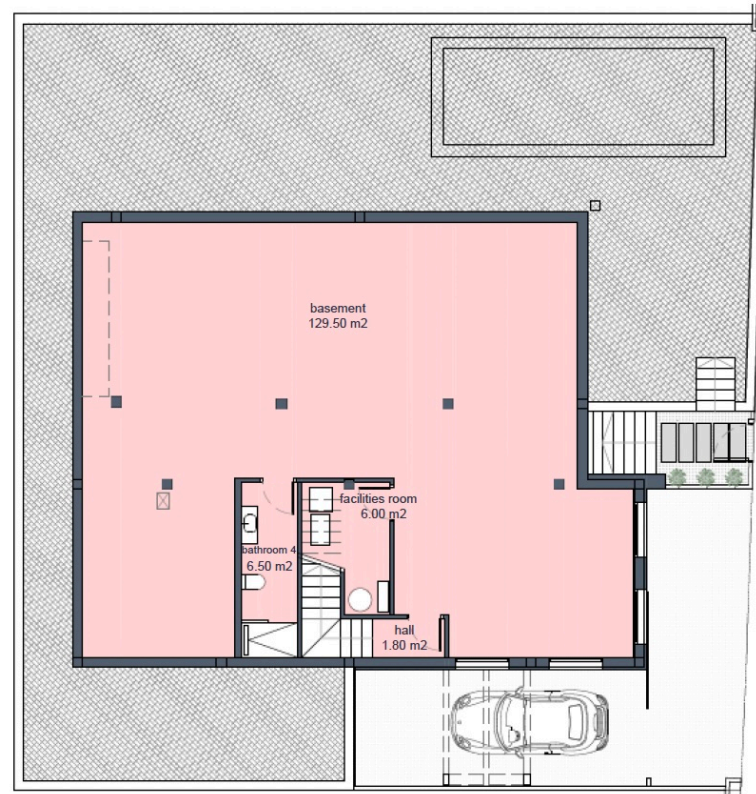


Périgord



BASEMENT

SOLARIUM



Santa Rosalía lake and life resort



SURFACES

Villa Signature 6	386 m2
	Superficie construida
Ground floor	159.70 m2
Basement	168.80 m2
TOTAL INTERIOR	328,50 m2
Covered terrace	19.75 m2
Uncovered spaces (Ground floor)	205.55 m2
Solarium	55.90 m2
TOTAL OUTDOOR SPACES	281,20 m2

Documento de carácter informativo, no contractual. Puede sufrir variaciones por razones técnicas, legales o comerciales. El mobiliario y electrodomésticos son meramente decorativos y no incluidos.

This plan is for illustration purposes only and may be modified for technical, legal or commercial reasons. The furniture and appliances shown are purely decorative and are not included.

JD
José Díaz García



★★★★★
BEST PROJECT
2021-2022