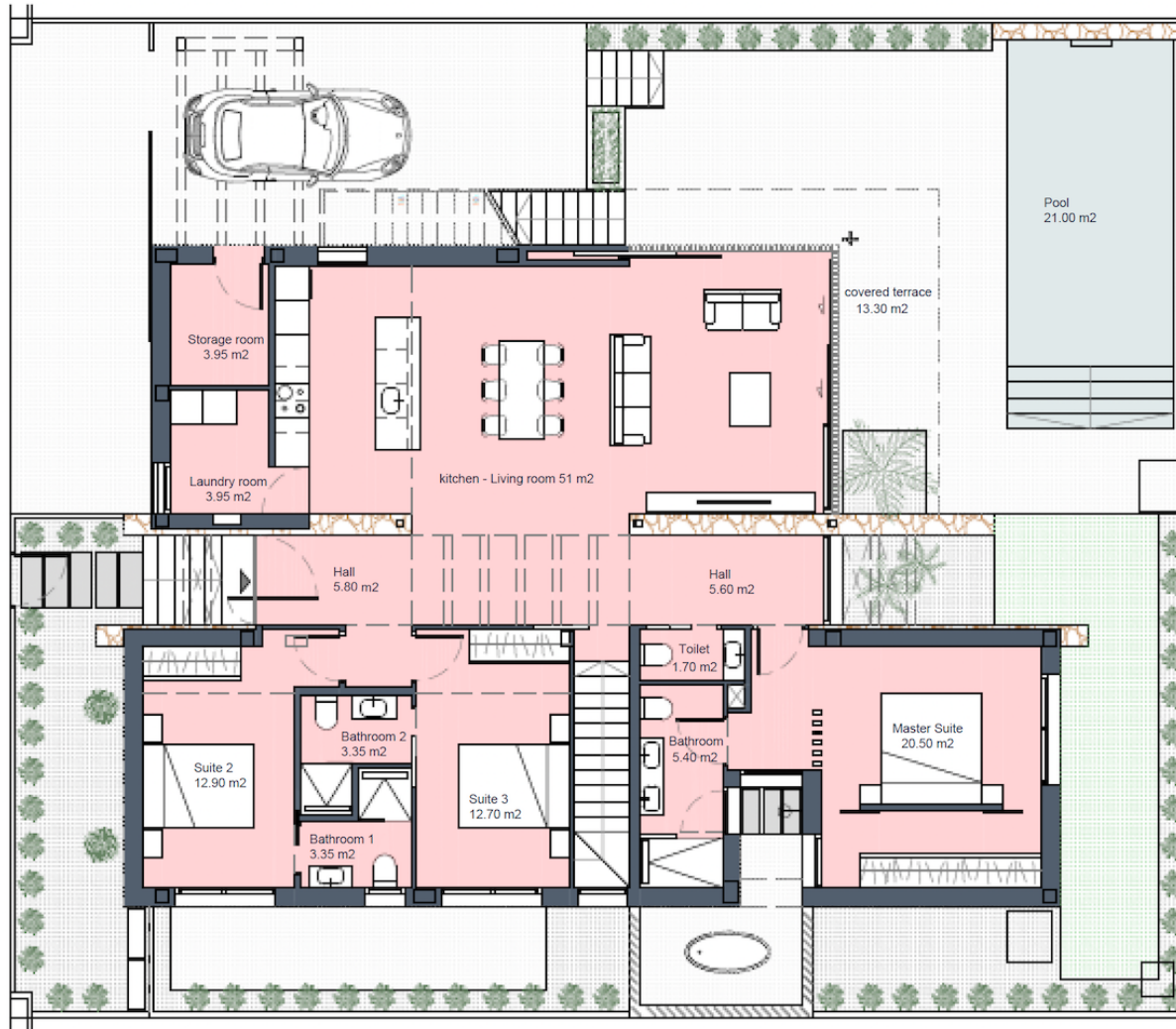




Périgord

GROUND FLOOR



our signature villa

santarosalia.life

Santa Rosalía lake and life resort



SURFACES

| Villa Signature 10 | 385 m ² |
|--|-----------------------|
| Superficie construida | |
| Ground floor | 166,00 m ² |
| Basement | 162,70 m ² |
| INTERIOR VIVIENDA 328,70 m² | |
| Covered terrace | 13,30 m ² |
| Uncovered spaces (Ground floor) | 205,70 m ² |
| Solarium | 55,90 m ² |
| TOTAL OUTDOOR SPACES 274,90 m² | |

Documento de carácter informativo, no contractual. Puede sufrir variaciones por razones técnicas, legales o comerciales. El mobiliario y electrodomésticos son meramente decorativos y no incluidos.

This plan is for illustration purposes only and may be modified for technical, legal or commercial reasons. The furniture and appliances shown are purely decorative and are not included.



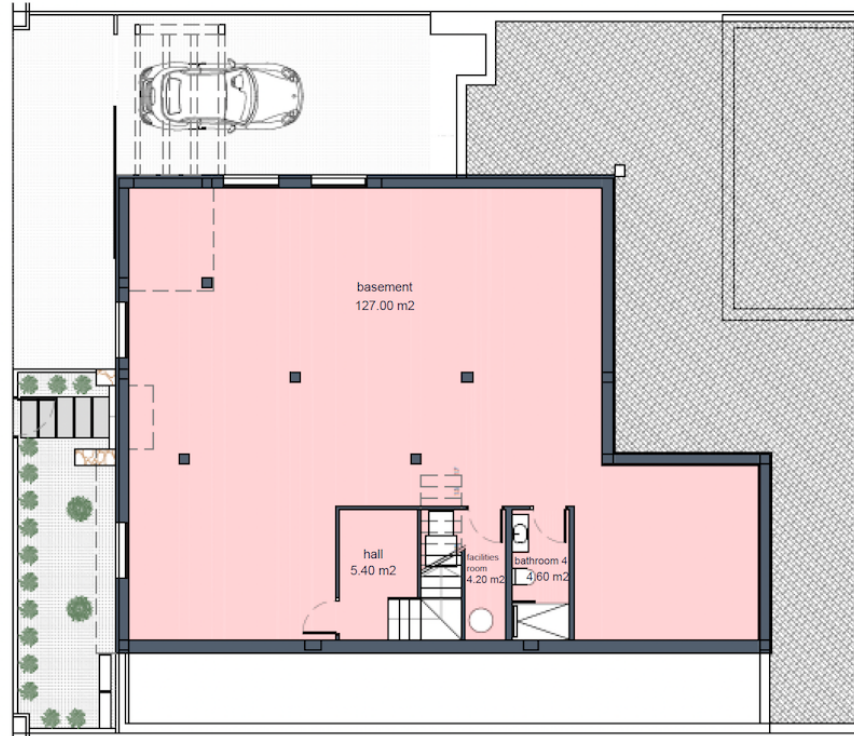
José Díaz García



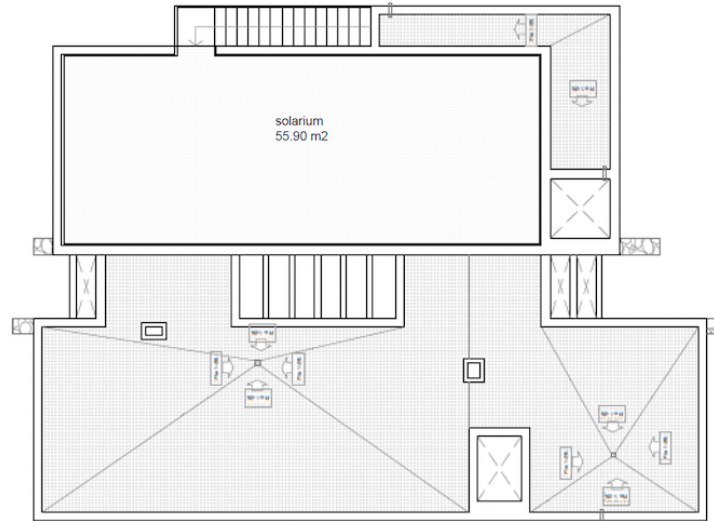
Périgord



BASEMENT



SOLARIUM



Santa Rosalía lake and life resort



SURFACES

| Villa Signature 10 | 385 m2 |
|---------------------------------|------------------|
| Superficie construida | |
| Ground floor | 166,00 m2 |
| Basement | 162,70 m2 |
| INTERIOR VIVIENDA | 328,70 m2 |
| Covered terrace | 13,30 m2 |
| Uncovered spaces (Ground floor) | 205,70 m2 |
| Solarium | 55,90 m2 |
| TOTAL OUTDOOR SPACES | 274,90 m2 |

Documento de carácter informativo, no contractual. Puede sufrir variaciones por razones técnicas, legales o comerciales. El mobiliario y electrodomésticos son meramente decorativos y no incluidos.

This plan is for illustration purposes only and may be modified for technical, legal or commercial reasons. The furniture and appliances shown are purely decorative and are not included.

JD
José Díaz García

