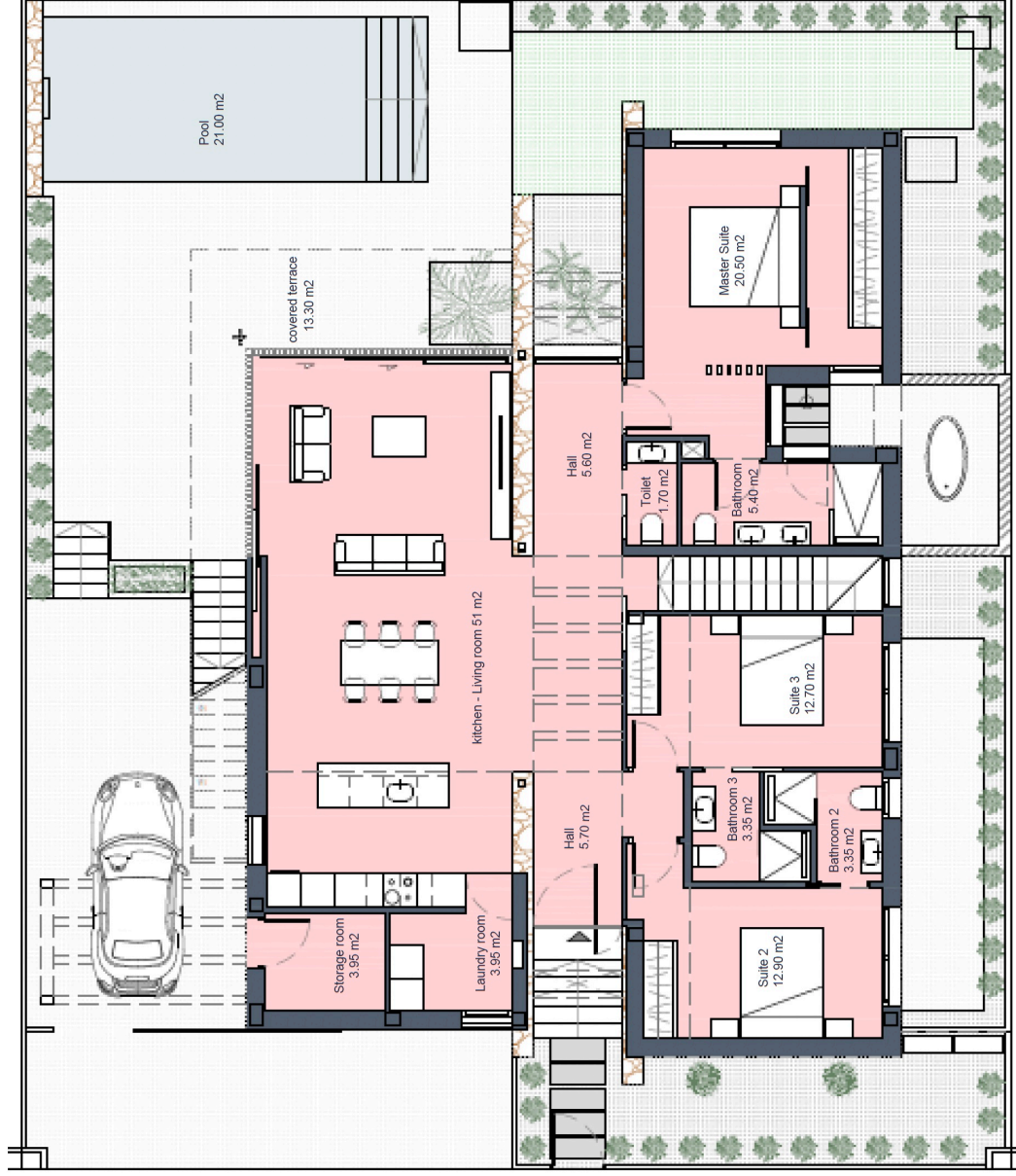




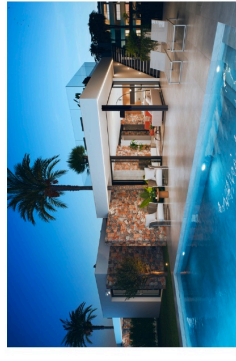
Périgord

GROUND FLOOR



Santa Rosalía

lake and life resort



SURFACES

Villa Signature 9	385 m²
Superficie construida	
Ground floor	166,00 m ²
Basement	162,70 m ²
INTERIOR VIVIENDA	328,70 m²
Covered terrace	13,30
Uncovered spaces (Ground floor)	205,70 m ²
Solanium	55,90 m ²
TOTAL OUTDOOR SPACES	274,90 m²

Documento de carácter informativo, no contractual. Puede sufrir variaciones por razones técnicas, legales o comerciales. El mobiliario y electrodomésticos son meramente decorativos y no incluidos.

This plan is for illustration purposes only and may be modified for technical, legal or commercial reasons. The furniture and appliances shown are purely decorative and are not included.



José Díaz García

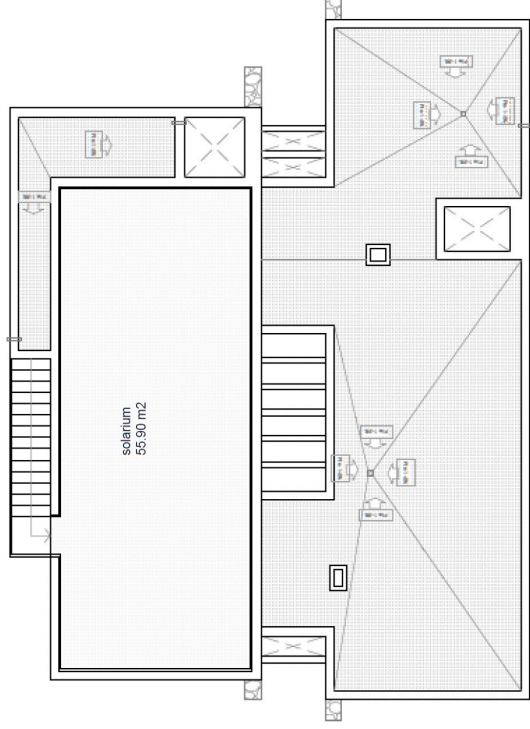


our signature villa
santarosalia.life



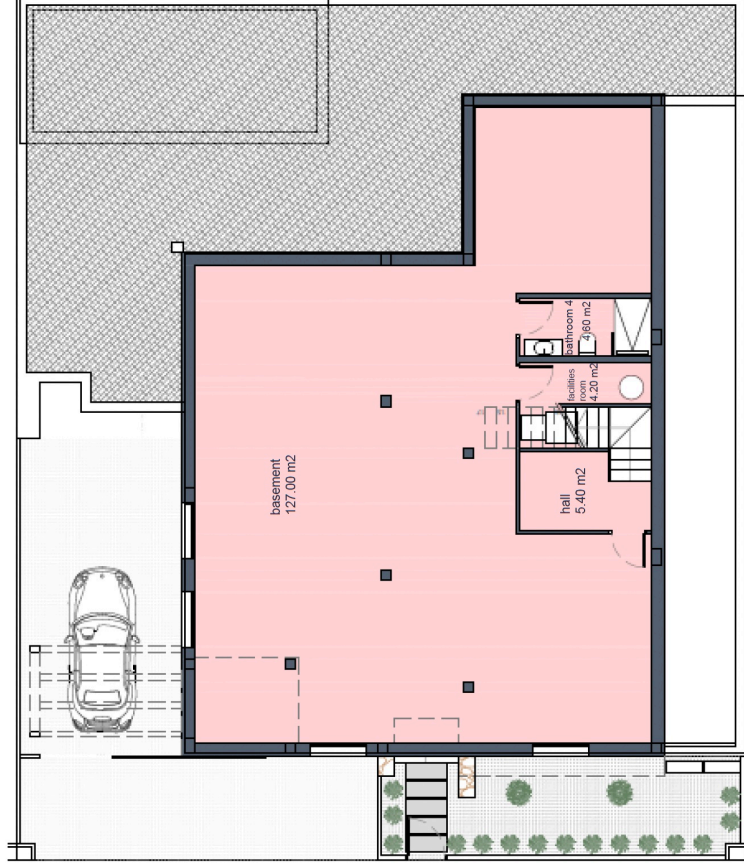
Périgord

SOLARIUM



solarium
55,90 m²

BASEMENT



basement
127,00 m²

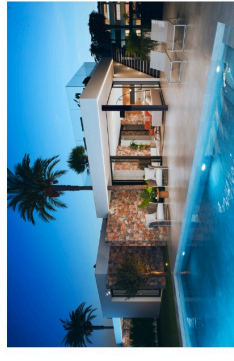
hall
5,40 m²

recliner
4,20 m²

patio
2,60 m²

Santa Rosalía

lake and life resort



SURFACES

Villa Signature 9	385 m²
Superficie construida	
Ground floor	166,00 m ²
Basement	162,70 m ²
INTERIOR VIVIENDA	
Covered terrace	13,30
Uncovered spaces (Ground floor)	205,70 m ²
Solarium	55,90 m ²
TOTAL OUTDOOR SPACES	274,90 m²

Documento de carácter informativo, no contractual.
Puede sufrir variaciones por razones técnicas, legales o comerciales. El mobiliario y electrodomésticos son meramente decorativos y no incluidos.

This plan is for illustration purposes only and may be modified for technical, legal or commercial reasons.
The furniture and appliances shown are purely decorative and are not included.



José Díaz García

