



La Manga

Mar Menor

Los Alcazares

Senator Hotel

La Serena View

Serena Golf

32 leiligheter

9 eneboliger







9 eneboliger

16 leiligheter

16 leiligheter



16 leiligheter

16 leiligheter

9 eneboliger



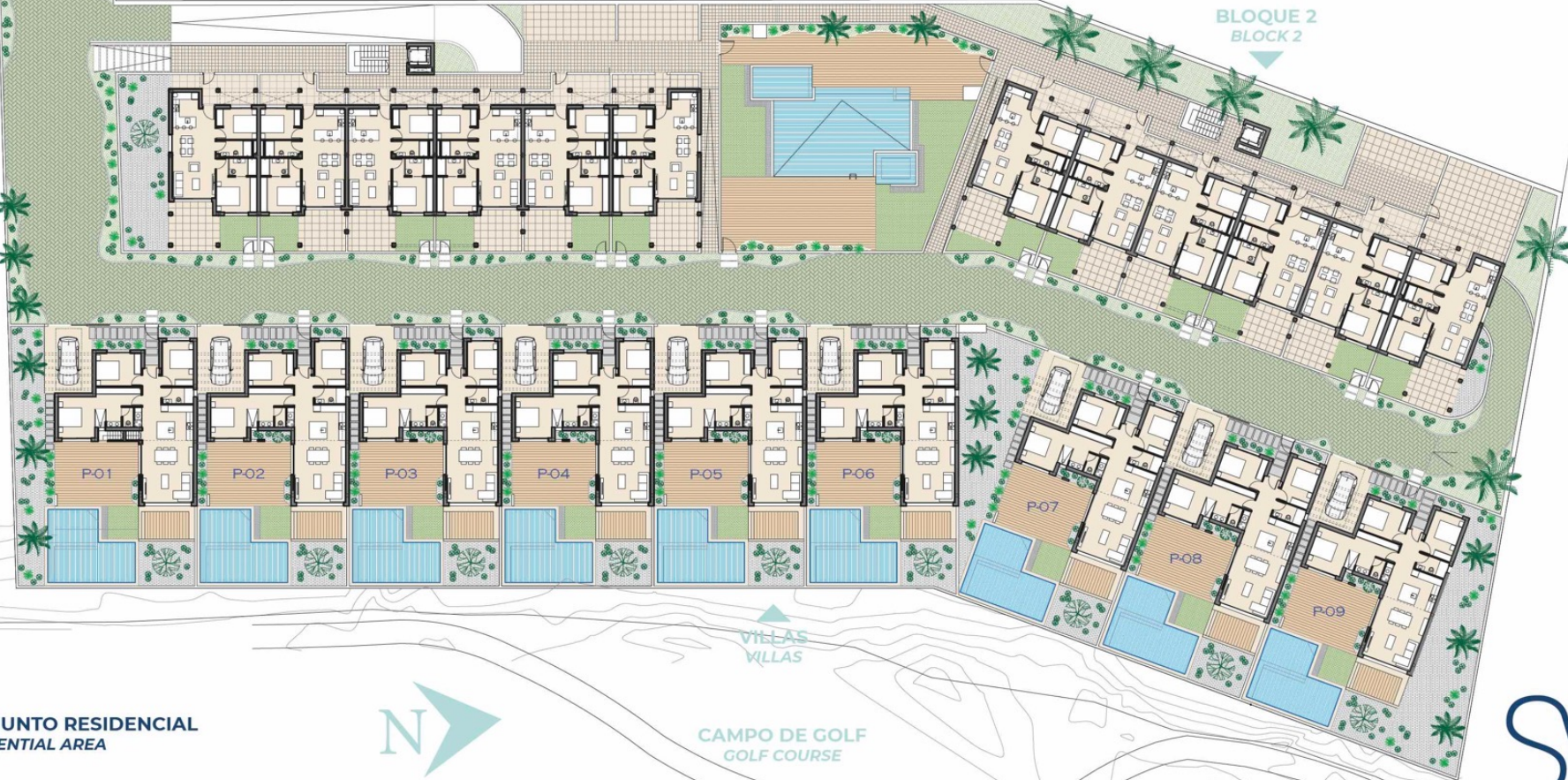
9 eneboliger

P-04	292,68 m ²	P-09	398,19 m ²
P-05	291,82 m ²		

BLOQUE 1
BLOCK 1

PISCINA COMUNITARIA
COMMUNAL SWIMMING POOL

BLOQUE 2
BLOCK 2



CONJUNTO RESIDENCIAL
RESIDENTIAL AREA



VILLAS
VILLAS

CAMPO DE GOLF
GOLF COURSE



RESIDENCIAL
La Serena View

Villa

SV

VILLA A
SUPERFICIE CONSTRUIDA
BUILT AREA
TOTAL — 108,03 m²

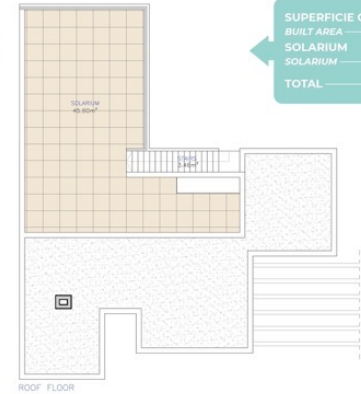


RESIDENCIAL
La Serena View

Villa

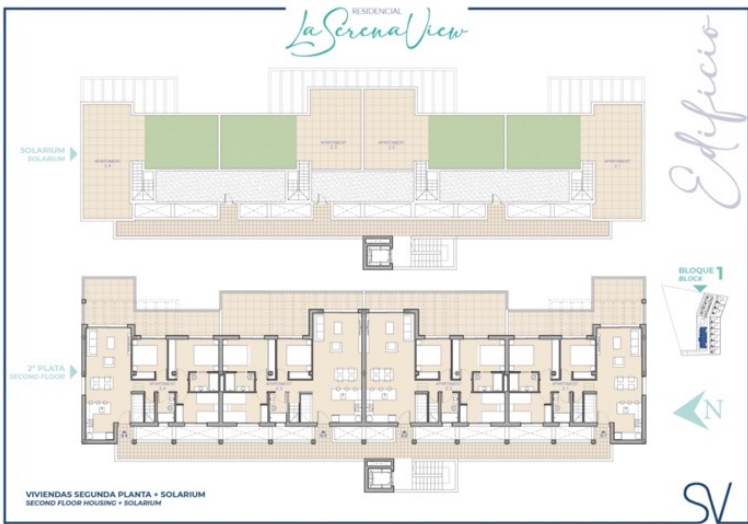
SV

VILLA B
SUPERFICIE CONSTRUIDA
BUILT AREA — 108,03 m²
SOLARIUM — 45,60 m²
TOTAL — 153,63 m²











RESIDENCIAL La Serena View

Structure made of reinforced concrete with B-500 SD corrugated steel, earthquake resistant.

Exterior enclosure wall made up of a double panel of ceramic brickwork and/or plasterboard, air cell and acoustic and thermal insulation. **Interior divisions** with brick walls and/or plasterboard in different areas by decision of the technical team.

Facade cladding using porcelain tiles in wood finishing in specific areas and white monolayer mortar. Ceilings in terraces of apartment building finished in natural wood.

Main armored security door of the house finished in brown on apartments and wood finishing in villas on the outside, and white on the inside.

Exterior carpentry in anodized aluminum lacquered in brown color textured (RAL 8014), thermally broken profiles, and motorized blinds in bedrooms and living room. Guardian sun glass in the living room.

Flooring with large format porcelain pavement (60x60) and antislip in exterior areas of the apartment and on the villa (90x90) format on the interior and wood finishing porcelain pavement on the exterior of the villa and common areas of the apartments. Colours to be chosen by the client from different options.

Ceilings in hall and specific areas using suspended plasterboard painted in white colour and checkable suspended ceilings in bathrooms.

Pre-installation of air conditioning system with ducts, cooper piping and electrical wiring to install the heat pumps on the roof.

Inside doors and wardrobes in DM lacquered in matt white. Interior of wardrobes finished with shelves, clothes rail and drawers.

Electrical wiring with TV and Internet RJ45 sockets in all the rooms and the living room, light points at the terrace and plot.

Kitchen unit in white stratify board combining colours Ecu and Wood (other colors and finishing options), and **worktop** made of 2cm Silestone® or Compac® in apartments, and large porcelain worktop of 12mm on villas, colors to be chosen among different options. Sink and **hood** included.

Domestic hot water system arotherm with a 110 liter accumulator.

Hand washbasin furniture in bathrooms with two drawers and washbasin in vitrified white porcelain, and countertop and **wash-basin** on villas. Shower floor made with anti-slip porcelain pavement and steel drain grate and **shower enclosure** with fixed glass. In wall flush **toilet** tank system.

Private swimming pool in villas Different dimensions (depending plot and villa type). Heat-pump pre-installation.

In common areas of the apartments, large pool with specific areas for kids and jacuzzi-spa.

Perimeter of the plot using concrete block walls finished off by white monolayer and metal fence covered with mediterranean decorative heather. **Vehicle entrance** using motorized gate including remote control.

Car park area in each villa. And parking in each apartment building, with storage units an facility rooms.

Video intercom system installed in each villa with connection to the main access of the urbanization.

Basement (only in selected units) finish with uncoated concrete in pavement, walls and stairs. Electrical and plumbing pre-installation. Other finishing options available.

Each villa has its **Energy Efficiency Certificate** obtaining a letter B.

Building Specifications



SV

The information contained in the drawings and building specifications is subject to variations for technical, commercial or legal reasons. The furnishing included in the drawings is only for information purposes.